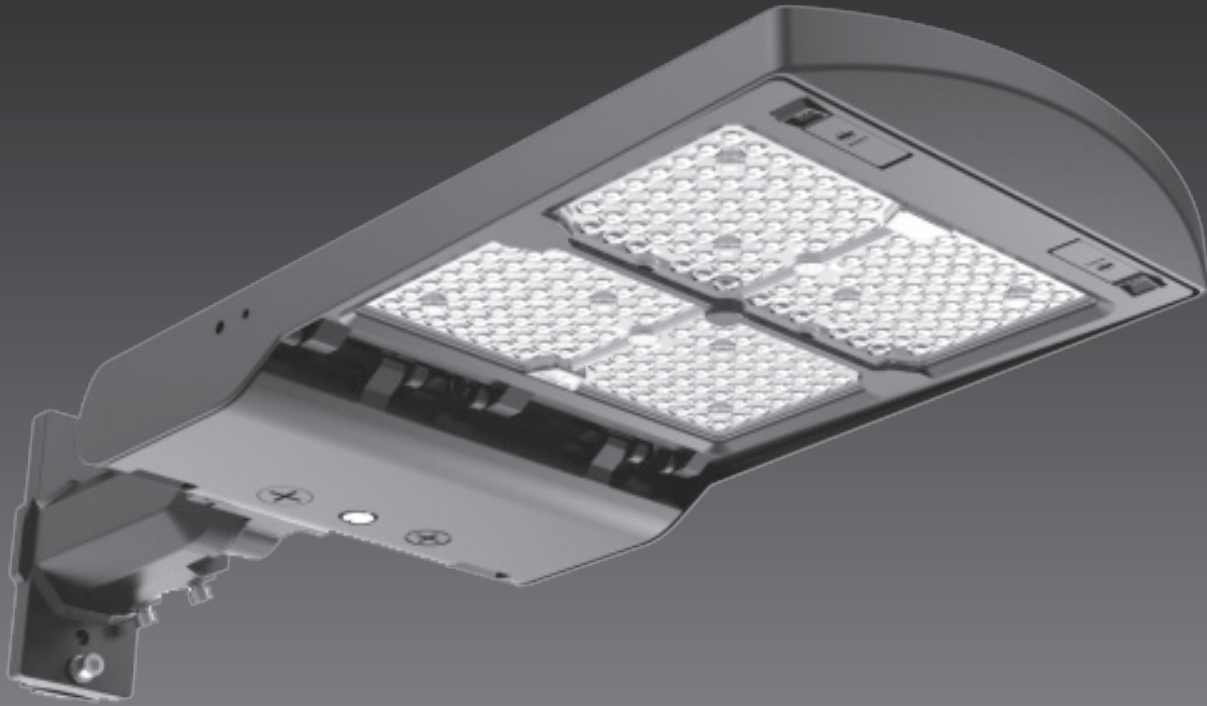


INTRINSIX

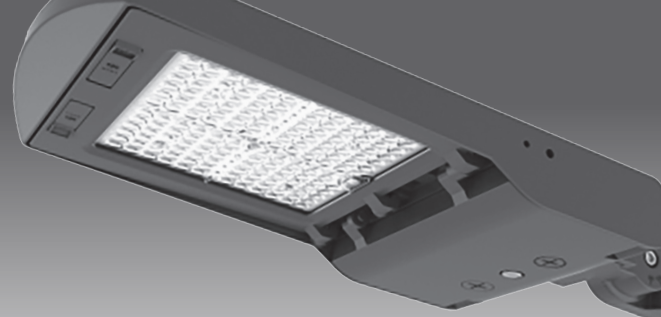


SIRIUS GEN 2

PRODUCT PROFILE

SIRIUS GEN 2

LED SHOEBOX LIGHT



Description

The IntrinsicX Sirius Gen 2 combines the duo of architectural form and versatility to make it an excellent choice for new construction or for retro-fit applications. It is offered in a variety of wattages (80/150/300) allowing for maximum flexibility in all types of applications.

The high output LEDs and custom engineered optics provide excellent uniformity and efficiency.

It is designed to replace the existing HID fixtures up to 1000W.

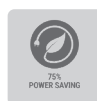
Specifications

- CCT: 3,000/4,000/5,000 Selectable
- Dimming: 0-10V
- Voltage: 100 to 277V, 50 to 60Hz
- Operating Temp: -40°F to 131°F
- IP Rating: IP65
- Power Factor: >0.90
- Sensor: Occupancy Sensor (Optional)
Exterior Photocell (Optional)
Integral Sensor Receptacle
- DLC Listing: Premium
- Warranty: 50,000 Hours/5 Years
- Distribution patterns: T2, T3, T4, T5



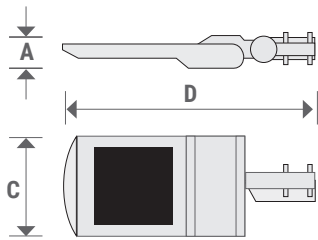
Fixture Details

Product Number	Watts (W)	Voltage (V)	CCT (K)	CRI	Efficacy (Lm/W)	Lumen Output (Lm)	Operating Temperature	IP Rating	DLC Product ID
IX-ALZ-80S-30/40/50LO	80	120-277	3000/4000/5000	>80	130/150/145	10880/12000/11600	-40° F to 131° F	IP65	TBA
IX-ALZ-150S-30/40/50LO	150	120-277	3000/4000/5000	>80	130/150/145	20250/22500/21150	-40° F to 131° F	IP65	TBA
IX-ALZ-150S-30/40/50HO	150	277-480	3000/4000/5000	>80	135/150/145	20250/22500/21150	-40° F to 131° F	IP65	TBA
IX-ALZ-300S-30/40/50LO	300	120-277	3000/4000/5000	>80	135/150/140	40500/45000/42000	-40° F to 131° F	IP65	TBA
IX-ALZ-300S-30/40/50HO	300	277-480	3000/4000/5000	>80	135/150/140	40500/45000/42000	-40° F to 131° F	IP65	TBA

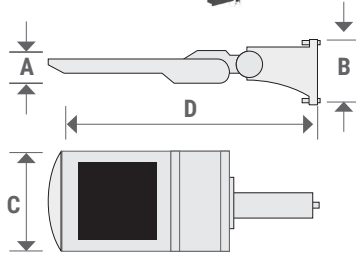


Product Details

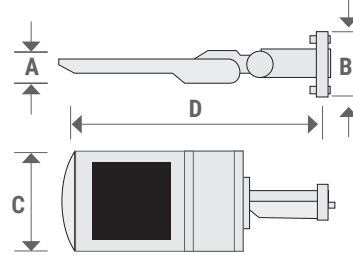
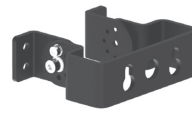
AM



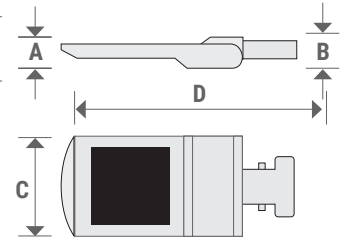
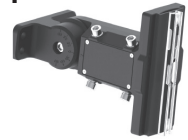
DM



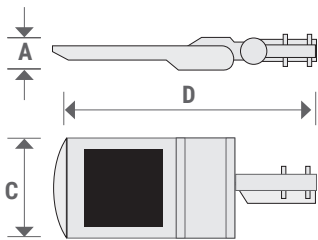
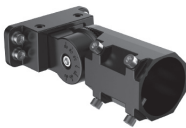
A&D



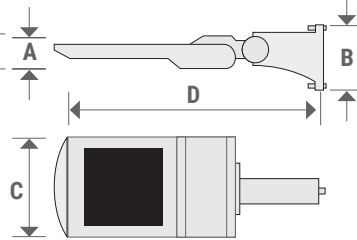
YM



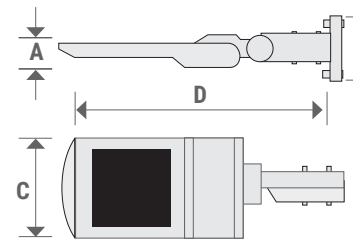
AM1



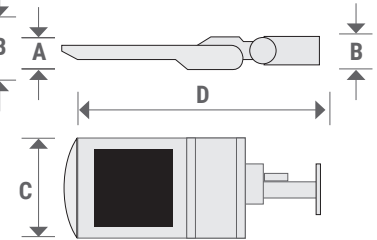
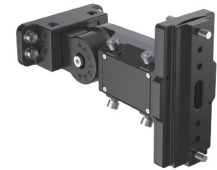
DM1



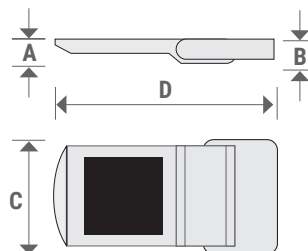
A&D1



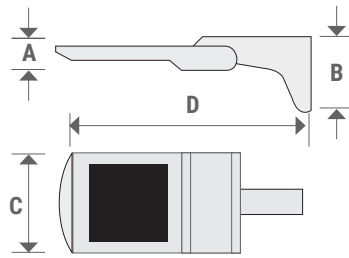
YM1



FM



DM2



80W

	AM	DM	A&D	YM	AM1	DM1	A&D1	YM1	FM	DM2
A	3.1"	3.1"	3.1"	3.1"	3.1"	3.1"	3.1"	3.1"	3.1"	3.1"
B	3.6"	6.3"	6.3"	3.1"	3.3"	6.3"	6.3"	3.1"	3.1"	6.8"
C	9.6"	9.8"	9.6"	9.6"	9.6"	9.6"	9.6"	9.6"	10.8"	9.6"
D	24.1"	25.6"	25.3"	22.2"	25.1"	26.6"	26.2"	24.7"	20.6"	24.5"

150W

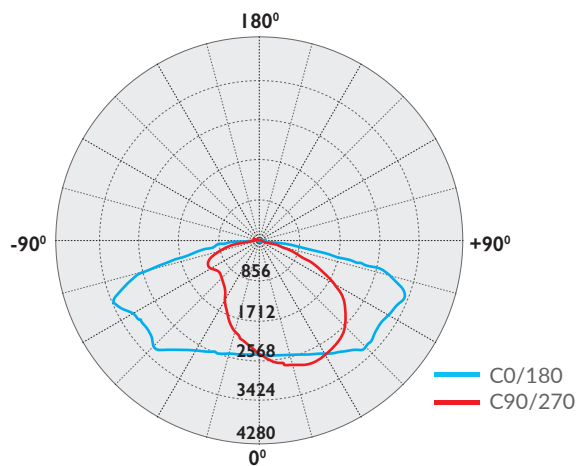
	AM	DM	A&D	YM	AM1	DM1	A&D1	YM1	FM	DM2
A	3.1"	3.1"	3.1"	3.1"	3.1"	3.1"	3.1"	3.1"	3.1"	3.1"
B	3.6"	6.3"	6.3"	3.1"	3.3"	6.3"	6.3"	3.1"	3.1"	6.8"
C	10.6"	10.6"	10.6"	10.6"	10.6"	10.6"	10.6"	10.6"	11.8"	10.6"
D	26.3"	27.9"	27.6"	24.4"	27.3"	28.9"	28.5"	26.9"	22.9"	26.7"

300W

	AM	DM	A&D	YM	AM1	DM1	A&D1	YM1	FM	DM2
A	3.1"	3.1"	3.1"	3.1"	3.1"	3.1"	3.1"	3.1"	3.1"	3.1"
B	3.6"	6.3"	6.3"	3.1"	3.3"	6.3"	6.3"	3.1"	3.1"	6.8"
C	12.7"	12.7"	12.7"	12.7"	12.7"	12.7"	12.7"	12.7"	13.9"	12.7"
D	28.4"	29.9"	29.6"	26.5"	30.9"	30.5"	29.0"	24.7"	24.9"	28.8"

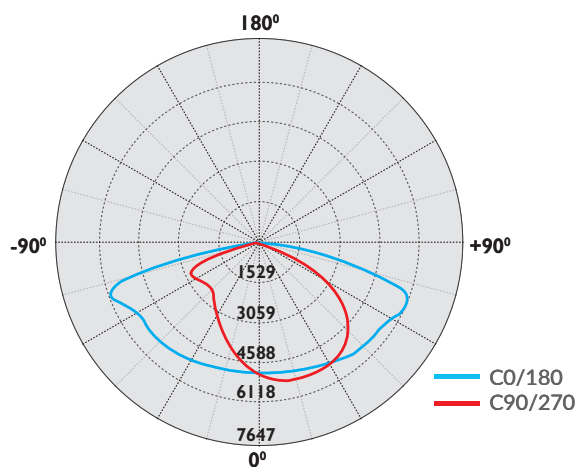
Distribution Diagram

IX-SG20DA-80-50L0



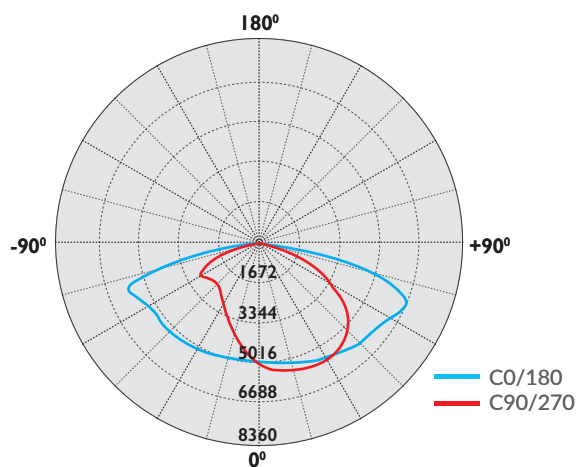
Average Beam Angle (50%): 123.6°

IX-SG20DA-150-50L0



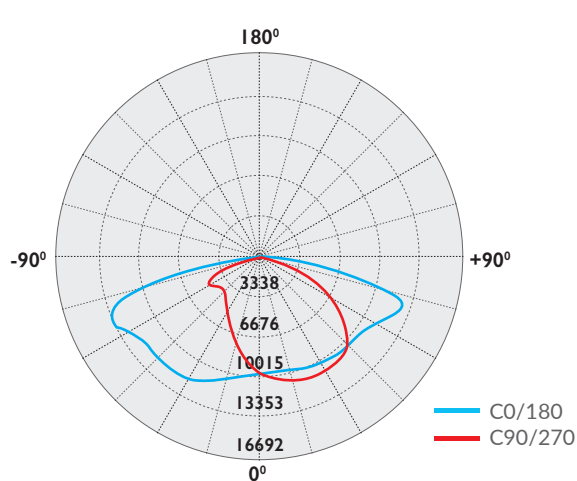
Average Beam Angle (50%): 142.1°

IX-SG20DH-150-50L0



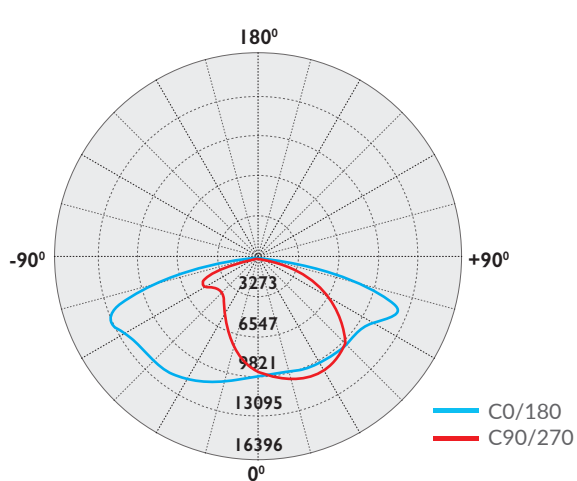
Average Beam Angle (50%): 142.1°

IX-SG20DA-300-50L0



Average Beam Angle (50%): 125.8°

IX-SG20DH-300-50L0



Average Beam Angle (50%): 125.7°